

Class Six

Class D: 9-27-2020: 6:00-7:00 PM CT

- Review games from last week
- Midgame strategy 1: simplification (trade, exchange)
- Theory Endgame 1: How to win/draw pawn endgame: (basic)
- Weekly internal round-robin Practice
- Homework assignment

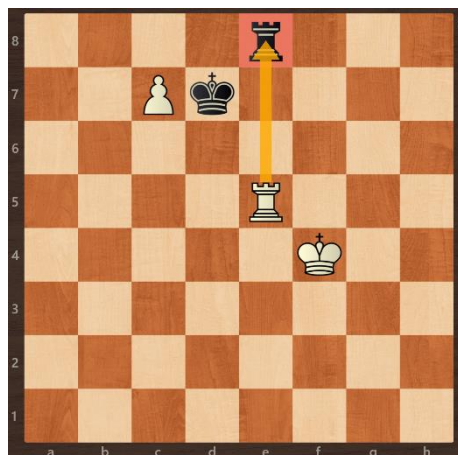
Midgame strategy 1: Simplification (basic and advance)

Simplification is an important and useful midgame strategy. It means to use a piece trade the opponent's piece of the same value. Usually, the simplification favors the side with advantage.

Three basic simplification Principle:

1. bad-positioned piece for good one (坏子换好子)
2. trade pieces when up material. (多子时兑子)
3. trade to destroy the pawn structure (破坏对手兵型)

Two examples:



Why should we trade pieces when up material?

Math Question: which number is Larger:

11/10 or 2/1?

Tug of War analogy

11 people pulling against 10 is a close fight, but 2 pulling against 1 is an easy win. 10 people can also cooperate while 1 is helpless.

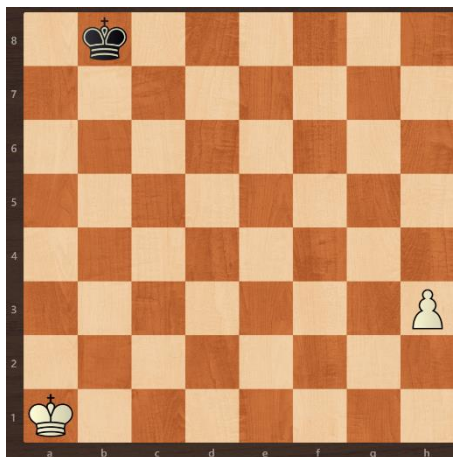
Theory endgame 1: How to win and draw pawn endgame?

(basic)

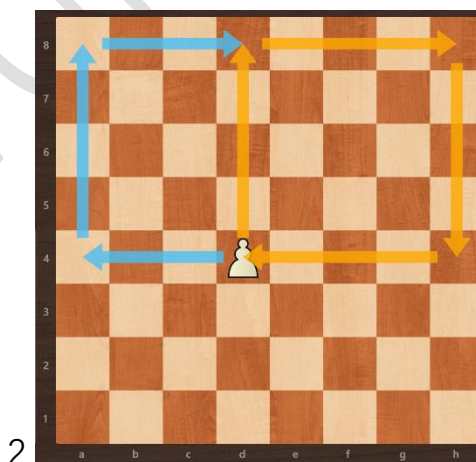
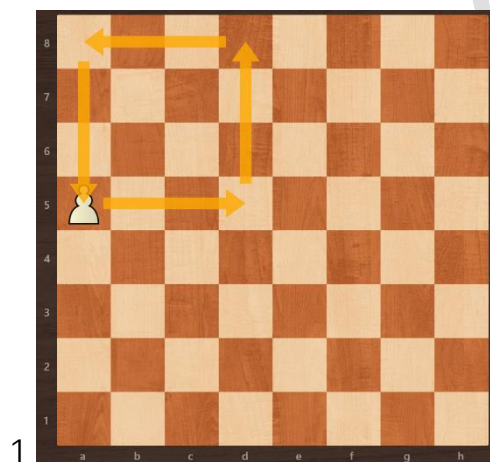
Square rule:

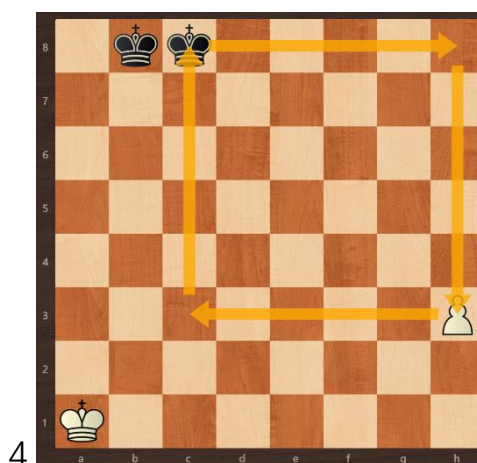
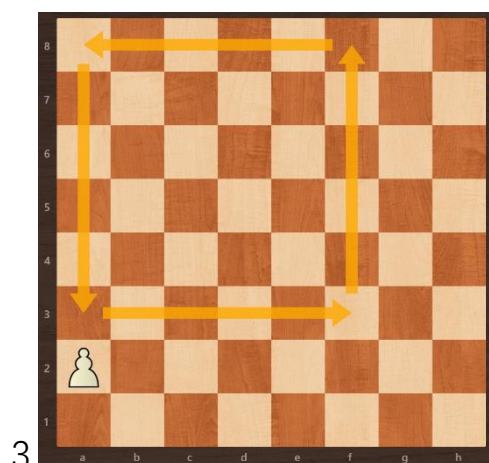
The Rule of the Square is used to determine whether or not a passed pawn can queen when it is not supported by its own king and the enemy king is chasing it.

Today we have a running race. White's pawn wants to promote while Black's King wants to catch it.



Question: White to move. Who will win the race, the White pawn or the Black King?





In diagram 1, ~~this is the square.~~ the square of promotion is marked in yellow.

In diagram 2, the squares of promotion are marked in both blue and yellow. (why?)

~~both yellow color and blue color are the square.~~

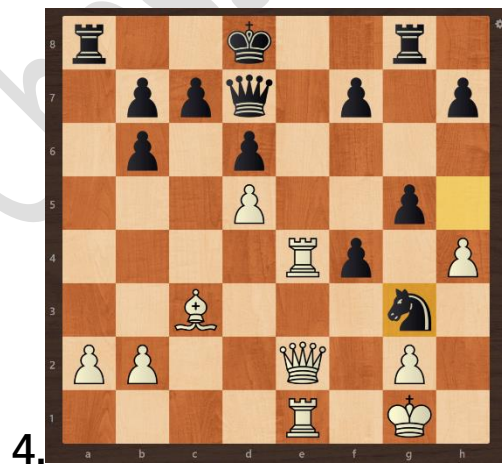
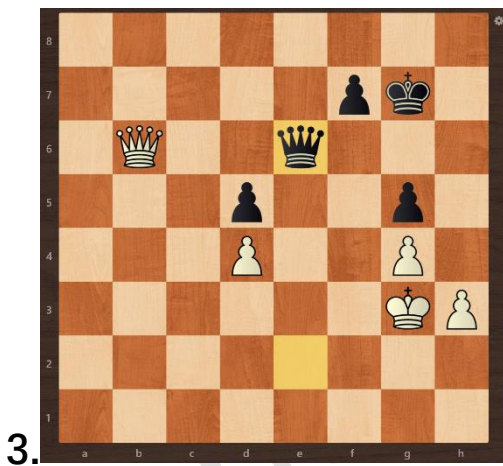
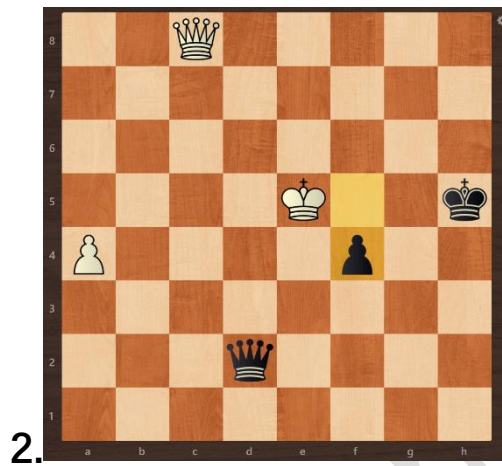
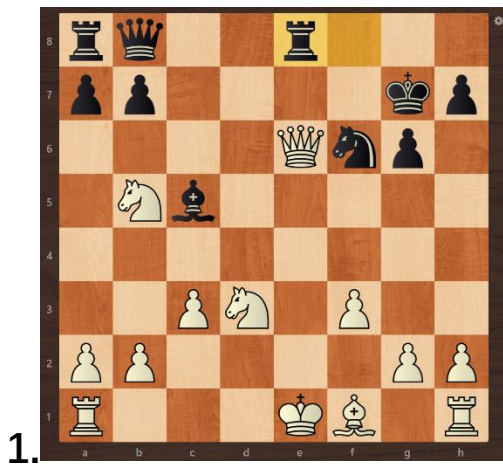
In diagram 3, the square of promotion is marked in yellow. ~~yellow color is the square.~~ (why?)

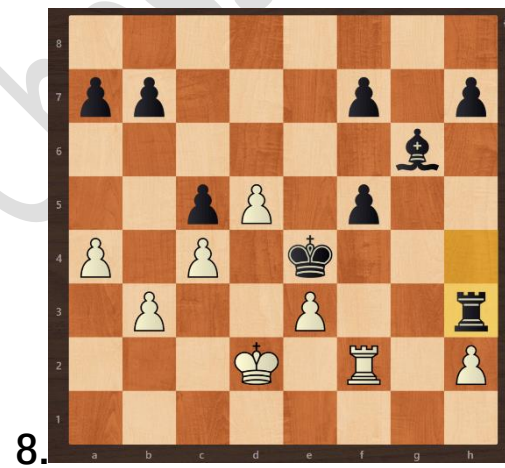
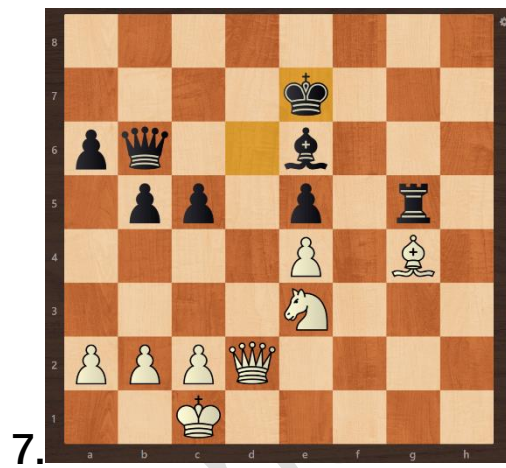
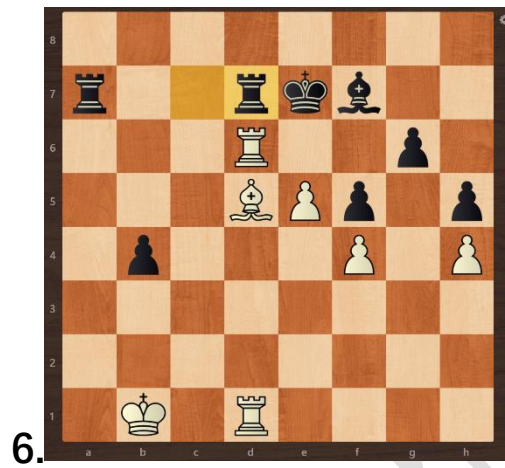
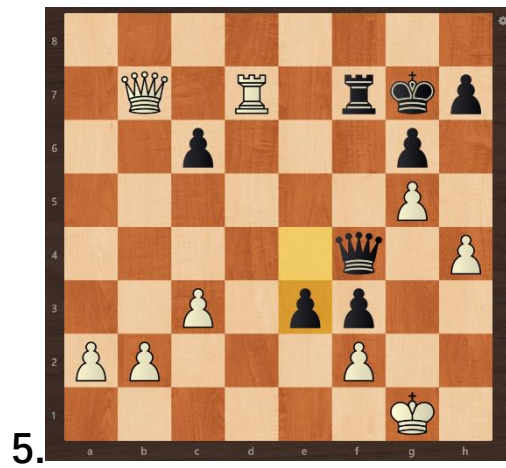
In diagram 4, White to move. The if Black King stands on b8, it cannot catch the pawn while on c8 can black king on c8 will stop the pawn from promotion while the king on b8 will not. (why?)

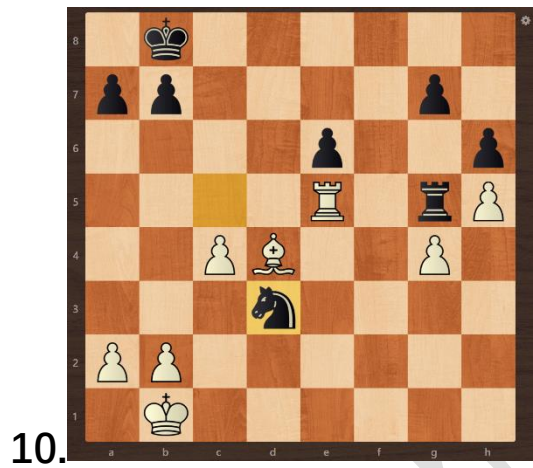
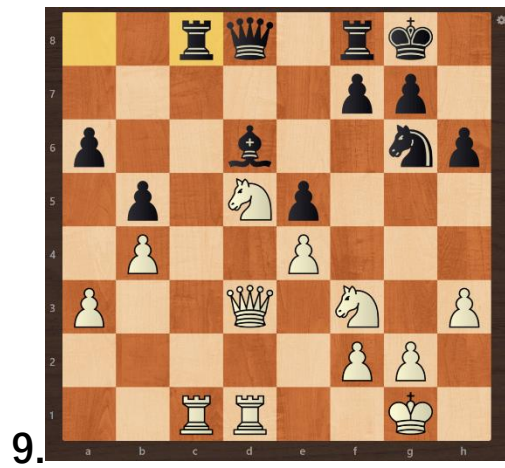
Homework: (White to move)

Theme: simplification

Hint: checkmate or win material







Rebecca Chess Club